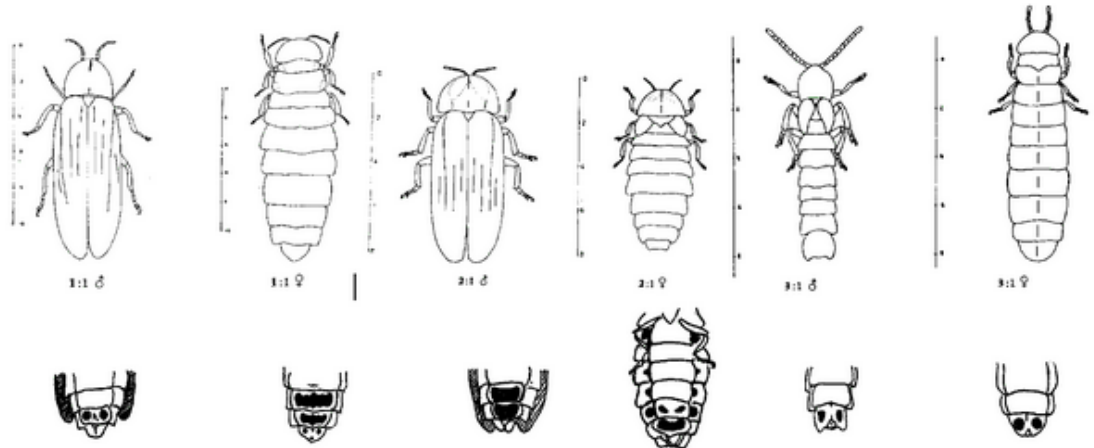


## How to recognise central European glow-worm species

Raphaël de Cock



Common European Glow-worm

Central European Firefly  
worm

Lesser Glow-  
worm

*Lampyris noctiluca*

*Lamprohiza splendidula*

*Phosphaenus hemipterus*

Figure 1. Three central European glow-worm species: males, females and ventral view on their light organ patterns (black coloured zones). Source: after Geisthardt 1971

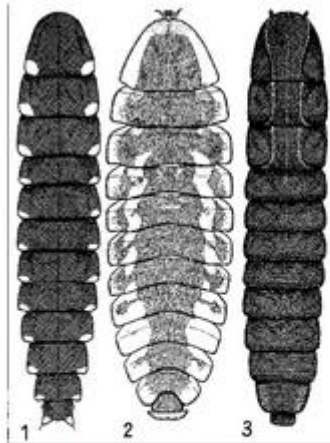


Figure 2. Glow-worm larvae:

1. *Lampyris noctiluca*
2. *Lamprohiza splendidula*
3. *Phosphaenus hemipterus*

Source : <http://cassidae.uni.wroc.pl/Colpolon/lampyridae.htm>

*Lampyris noctiluca* (mâle et femelle) :



*Lamprohiza splendidula* (mâle):



*Phosphaenus hemipterus* (mâle) :

